




OYSTRA

RICHMIND



RICHMIND HOLDING

With a stellar reputation as a leading diversified conglomerate, Richmind Holding's continued success is attributed to the highly progressive business acumen of its visionary founders and Board of Directors. With experience spanning several decades, the organization has solidified its position as a trusted partner with elite level expertise in multiple industries ranging from:

REAL ESTATE

Delivering end-to-end services inclusive of sales transactions, asset acquisitions, property management and conveyancing.

HOSPITALITY

Offering bespoke short-term rental services designed to cater to a highly selective international clientele.

CONSTRUCTION EQUIPMENT

Providing construction equipment on a rental based business model, ensuring operational excellence and project efficiency.

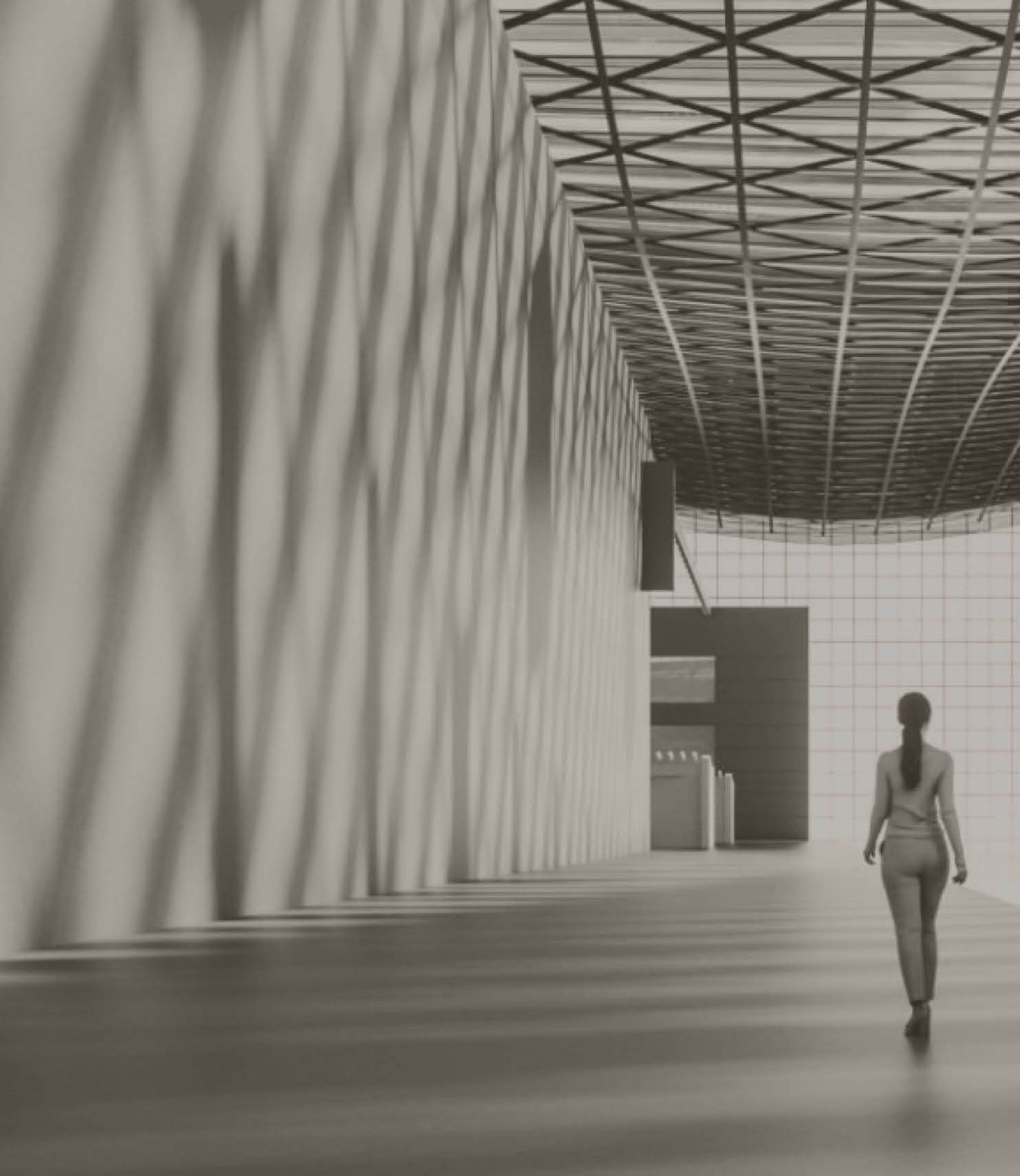
COMMODITIES TRADING

Operations with a commitment to delivering premium products to meet dynamic market demands.

PHARMACEUTICALS AND MEDICAL EQUIPMENT

Enabling access to cutting-edge healthcare solutions that comply with the highest international benchmarks.

The organization's strategic edge is found in its extensive network of partners and consultants, meticulously vetted world-class talent under its employment and most importantly, a deep understanding of a variety of unrelated industries, respective governmental policies and the ability to rapidly grasp cultural nuances to drive successful businesses, particularly in the MENA and European markets.



RICHMIND

Richmind blends artistry, nature, and human-centered design to create living spaces that go beyond architecture. Rooted in harmony between people and place, our homes and destinations are crafted with care, precision, and in-house expertise.

We deliver not just excellence, but certainty—guided by empathy and long-term vision. At Richmind, every project reflects our belief that thoughtful design can unite beauty and function, elevating the way people live.



Being distinct means setting ourselves apart in every dimension-our operations, our projects, our designs, and our services. Through thoughtful differentiation and innovation, we create experiences that are unmatched.

DISTINCT BY DESIGN

'By design' carries a profound duality. It signifies intentionality-every detail deliberately chosen to reflect purpose and quality. It also highlights the role of architecture and physical design as a transformative force, shaping spaces that balance function with artistry.



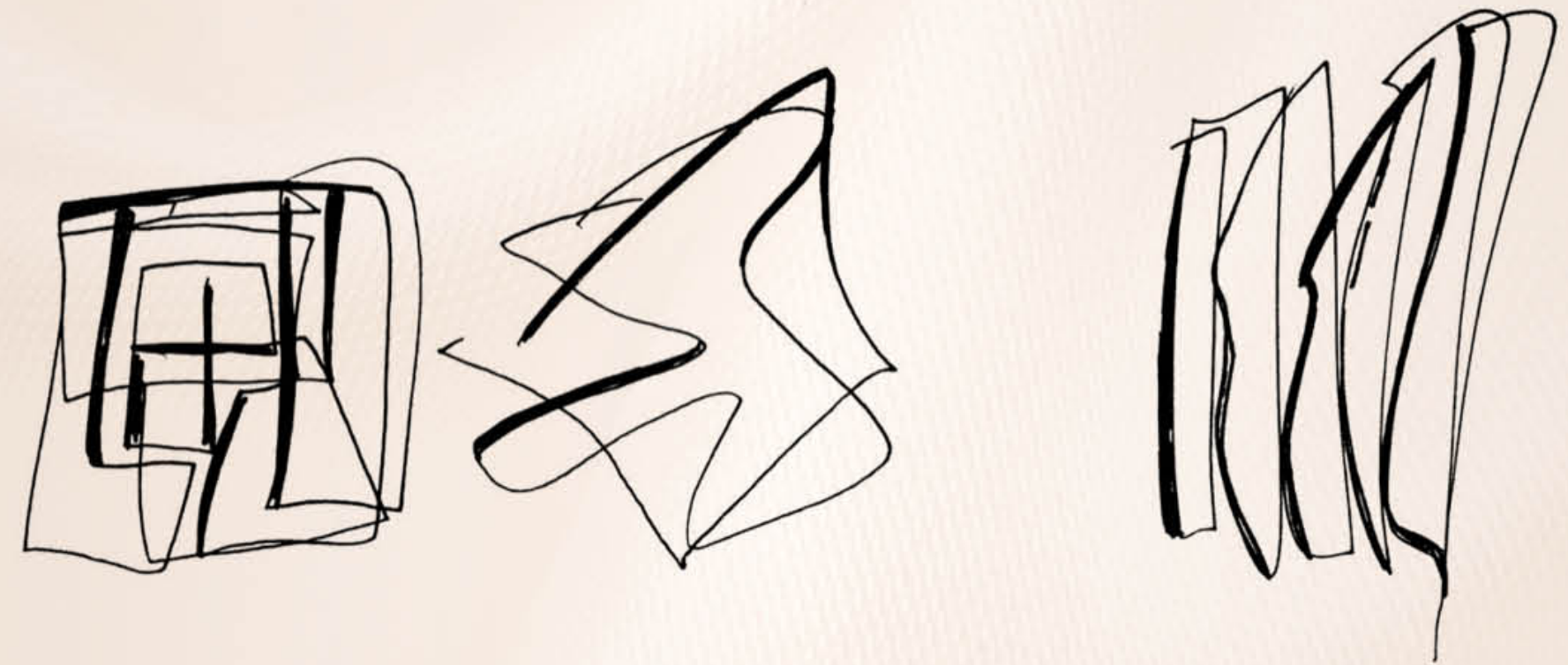
SCULPTING THE FORM

“Architecture is really about well-being.”

Zaha Hadid



Zaha Hadid Architects



“People do ask ‘why are there no straight lines, why no 90 degrees in your work?’
This is because life is not made in a grid.
If you think of a natural landscape,
it’s not even and regular
but people go to these places and think it’s very natural, very relaxing.
We think that one can do that in architecture and design”

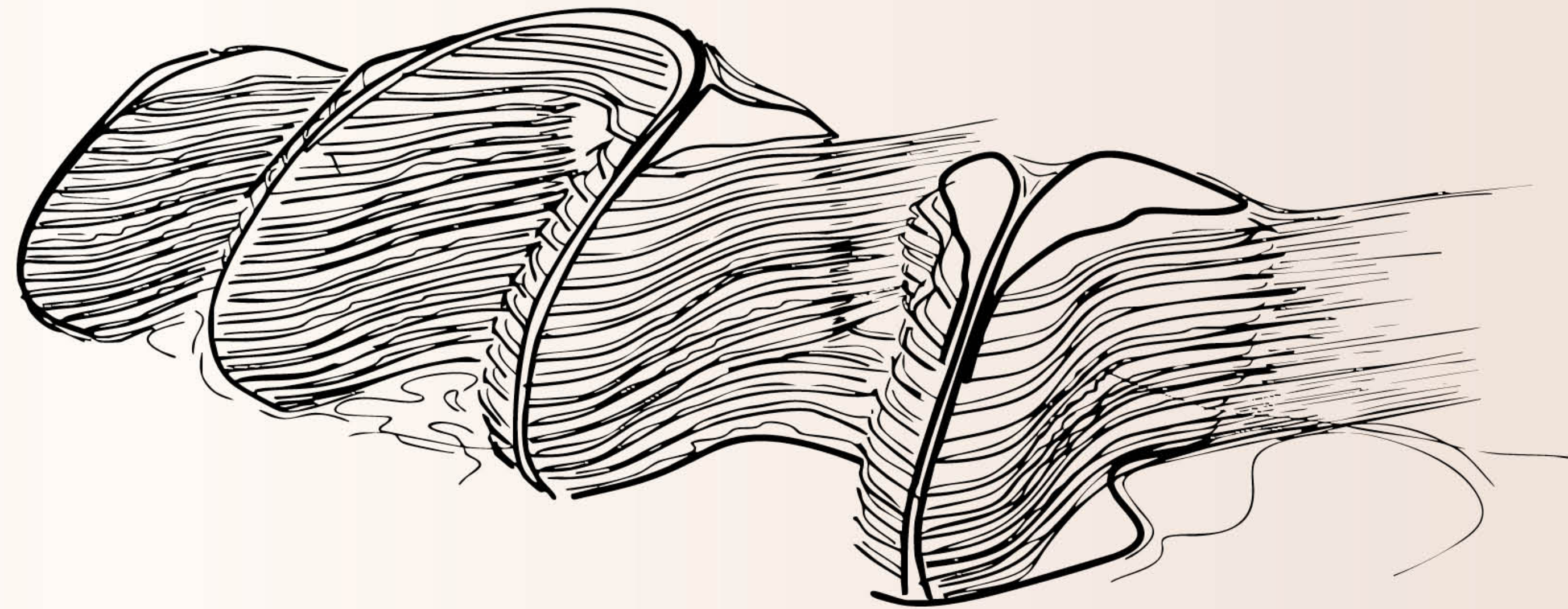
-Zaha Hadid for Lumens, 2022



TRANSFORMING STATIC INTO LIVING

Zaha Hadid Architects (ZHA) are renowned for transforming static structures into living forms.

Just as an oyster opens to reveal a pearl, Oystra's architecture unfolds gracefully, its curved silhouette echoing the natural form of an open shell.







HBA

DESIGN THAT GIVES FORM TO EMOTION

For over half a century, HBA has been a leading voice in the world of hospitality and design.

A multidisciplinary creative collective, HBA brings decades of experience across specialisms, markets and industries pioneering holistic design solutions that give form to emotion, shaping the world and inspiring the way people live.

St. Regis The Palm, Dubai



Revier Hotel, Dubai



Address Sky View, Dubai



Grand Hyatt, Dubai





HBA brought Oystra's interiors to life with spaces curated to feel both organic and grand—where textures, finishes, and natural light work in harmony.

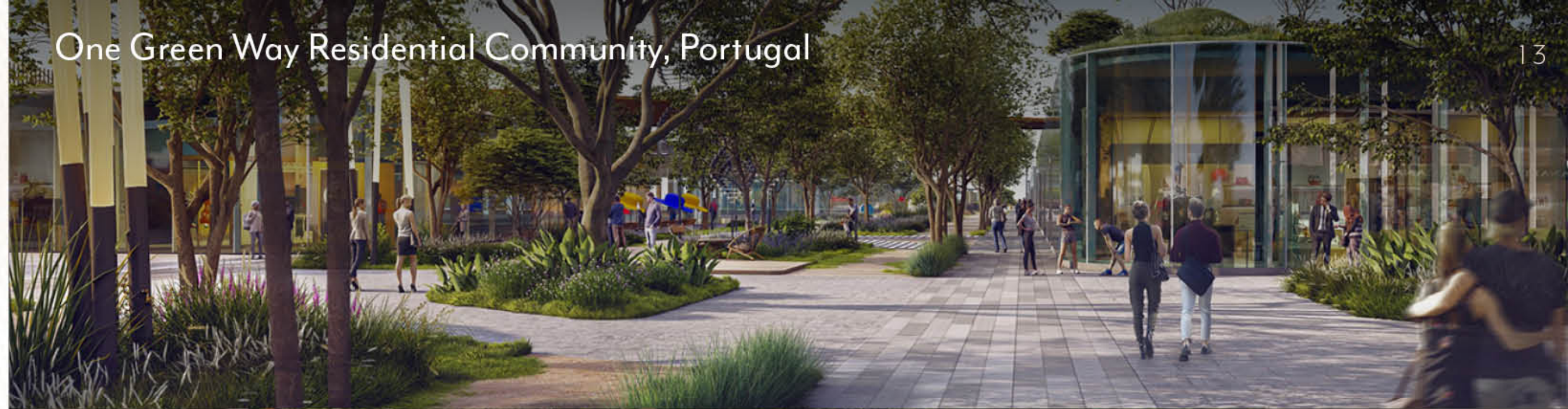


cracknell

From the Burj Khalifa Boulevard to Museum of the Future, Cracknell has shaped some of the most iconic landscapes in the region and beyond.

Their work blends nature with narrative, design with emotion.

One Green Way Residential Community, Portugal



Old Town, Dubai



Museum of the Future, Dubai



Al Mouj, Oman





EVERY DETAIL EVOKES TRANQUILITY AND MOVEMENT

At Oystra, Cracknell brings this mastery to the shoreline, crafting a coastal landscape that flows with the rhythm of the sea, the elegance of the architecture, and the spirit of Al Marjan Island.





Dewan

Dewan Architects + Engineers is a leading multidisciplinary design firm founded in 1984 in Abu Dhabi. With over 750 professionals across eight global offices—including recent expansions in Egypt and Vietnam—the firm delivers innovative, sustainable architecture across hospitality, residential, commercial, retail, cultural, education, and master planning sectors.

Dewan is known for pushing boundaries through cutting-edge design and technology, consistently exceeding client expectations.

La Mer Maison, Dubai



Citywalk, Dubai



Wynn Casino, Al Marjan Island, Ras Al Khaimah



Central Park at Citywalk, Dubai





RAS AL KHAIMAH A SHIMMERING JEWEL, CRADLED BY THE SEA

Ras Al Khaimah offers a striking natural backdrop, from mountains to pristine beaches.

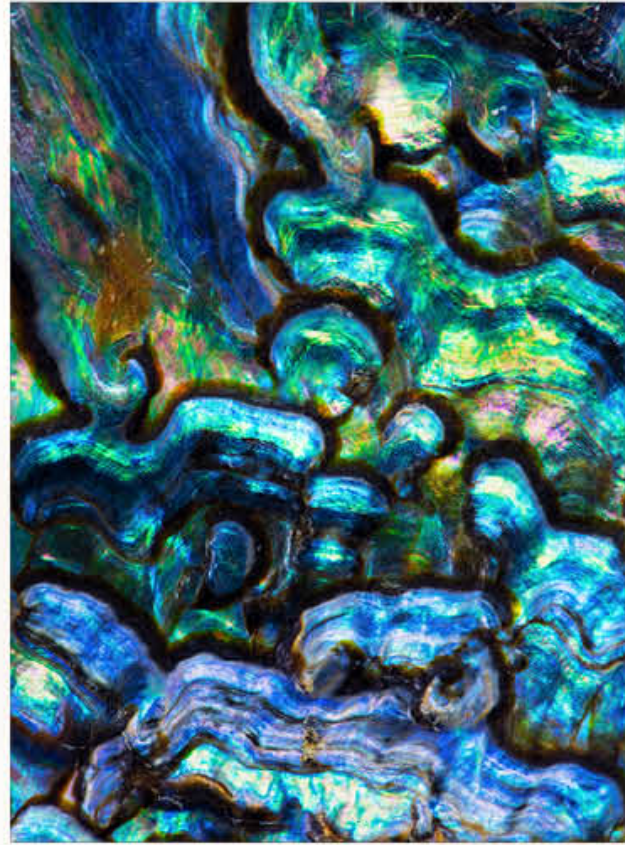
It's fast becoming a global hub for luxury tourism and real estate, anchored by the landmark Wynn Al Marjan. With no income, capital gains, or property taxes, it also stands out as a highly attractive, tax-free investment destination.



AL MARJAN ISLAND
RAS AL KHAIMAH

THE ENTERTAINMENT
CAPITAL OF THE REGION





AL MARJAN ISLAND

As Ras Al Khaimah's most iconic coastal development, Al Marjan Island is home to world-class resorts, pristine beaches, and vibrant leisure spots. Here, the serene landscape is complemented by innovative architecture.

Al Marjan Island offers 4.5 kilometers of beachfront and crystal-clear waters, with panoramic views all around. It's home to world-class hotels, luxury residences, and top leisure spots—just minutes from Wynn Al Marjan, Al Hamra Mall, and RAK International Airport. A destination in the global spotlight.






OYSTRA

A LIVING MASTERPIECE

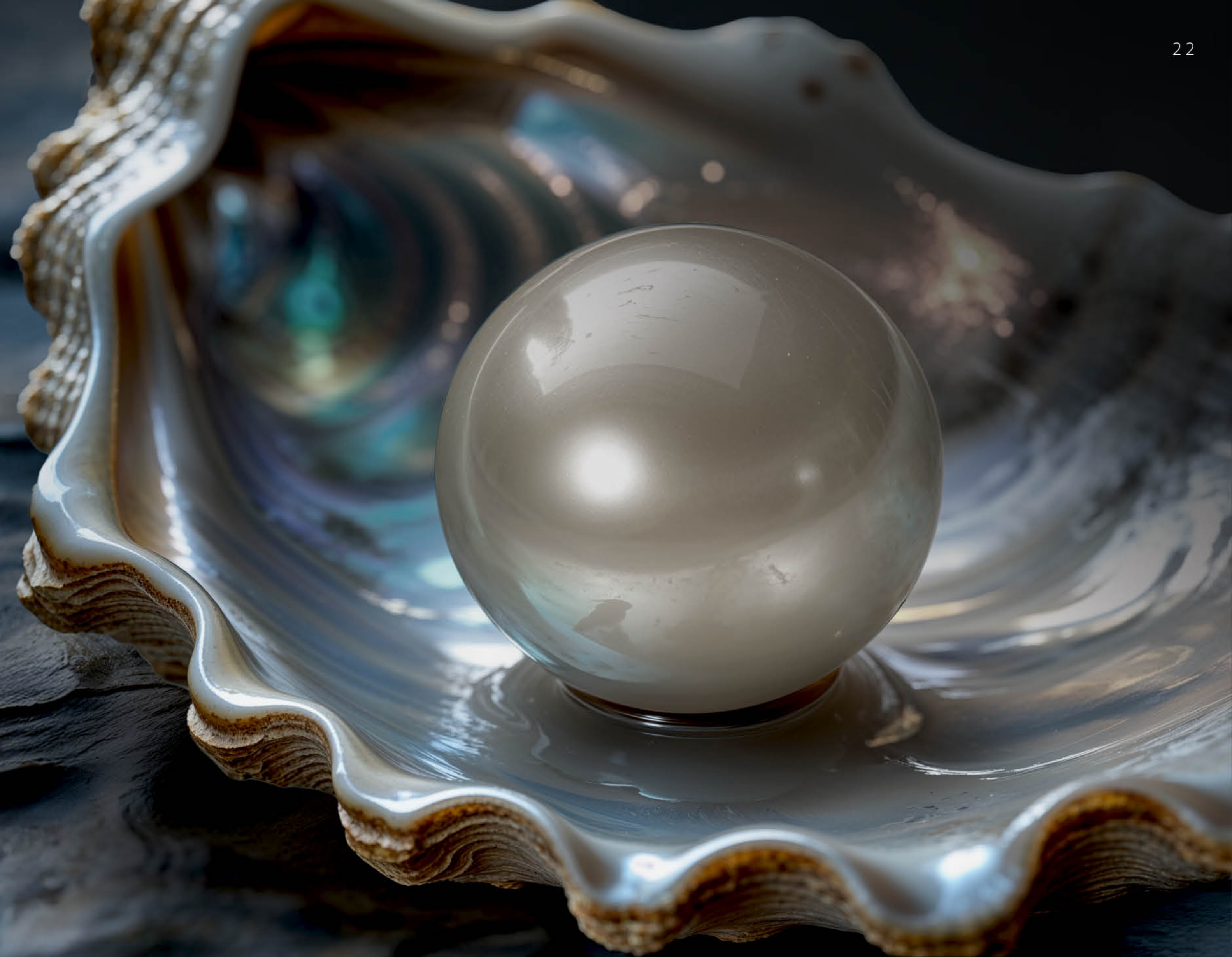
Beneath the ocean's surface, an oyster slowly shapes a pearl, one of nature's rarest treasures.

And above it, a masterpiece takes shape, designed by visionaries, sculpted by the sea, crafted by nature.

THE INSPIRATION

Oystra draws upon the oyster's mysterious allure and the pearl's timeless mystique. Soft opalescent hues and subtle luminescence channel mother-of-pearl's refined elegance, while mythological symbolism of purity, hidden riches, and transformation influences every detail.

Rounded curves, organic textures, and layered materials echo the oyster's tranquil yet potent essence, creating a refined haven that celebrates nature's artistry and the transformative power of beauty.







FRAMING THE PANORAMA





SEAMLESSLY BLENDING
NATURE & DESIGN





BLENDING IN, YET STANDING OUT

Designed as a living sculpture, Oystera embodies the idea of movement. Its curved facades, flowing balconies, and seamless transitions are inspired by the natural flow of water.

This visionary approach allows the building to blend effortlessly with the surrounding landscape while standing out as an iconic structure on Al Marjan Island.





OCEAN VIEWS FROM ALL ANGLES

Oystra is positioned to offer uninterrupted views of the Arabian Gulf. From the moment you arrive, the ocean becomes a part of your everyday life, framed by sandy shores of Al Marjan Island.





A SEAFRONT MASTERPIECE

Oystra's interiors are crafted to reflect the project's overarching concept of fluidity and organic form.

The design language seamlessly blends luxury and natural elements, creating spaces that feel both refined and welcoming. The aesthetic is modern, with a focus on curvature, softness, and understated elegance.



THE TERRACE EXPERIENCE

Each terrace is designed as a private retreat, with enough space to accommodate comfortable seating, lounging areas, and even outdoor dining. Whether on a lower floor or a penthouse level, each is a perfect setting to unwind.







GOOD DESIGN ISN'T JUST SEEN—IT'S FELT

Neutral tones—beige, sand, and muted earth shades—dominate, complemented by rich textures and natural materials. The curved architectural features maintain a sense of movement throughout the space.



WELLNESS, PLAY, LEISURE – PERFECTED

Set within a highly sought-after location, the amenities have been meticulously designed to reflect the same standard of excellence that defines the entire development. Every element has been thoughtfully curated—from spatial planning to the selection of equipment and materials—drawing on best-in-class sources known for their innovation and quality. Encompassing a broad spectrum of lifestyle needs, the amenities serve not only a functional purpose but also elevate everyday living, integrating seamlessly into the architectural and natural rhythm of the environment.





THE INFINITY POOL

Experience RAK's first 360° infinity pool surrounded by lounges and a rooftop bar that is reimagining what high-end leisure truly means.







AMENITIES

State-of-the-art personal training studios

Yoga pavilions

Paddle courts

Golf simulator

Children's playground

Heated swimming pools

Heated lap pool

Private cinema

Children's soft-play area.

Games room





CURATED SHARED SPACES

Indoor and outdoor lounge spaces and bars

Artisanal café with curated coffee blends.

Pet-friendly park designed to feel open and inclusive.

Resort-style sundeck and cabanas around pools and open lawns.

Ample green spaces.

Water features integrated into landscape design.













LOCATION AND PROXIMITY

3MIN

Wynn, Al Marjan Island

7MIN

Al Hamra Mall

10MIN

Al Hamra Golf Club

20MIN

RAK International Airport

15MIN

Al Hamra Marina Walk

55MIN

Dubai International Airport

60MIN

Dubai Mall

60MIN

Jebel Jais








OYSTRA